

Snowjourner

Bringing together the people of the Springfield Ski and Travel Club



August 6

**has been
cancelled**

Happy Hour

August 20 • 5 to ? pm

Prop Club

264 MAPLE GROVE
SPRINGFIELD

**Information on upcoming trips! Masks required
inside building. No food will be served and please
don't bring your own.**



*If you have moved or plan to, please contact the VP for Membership for a change of address.
Your Snowjourner cannot be forwarded due to bulk rates.*

Published by the Springfield Ski Club, A Not-for-Profit Corporation

Please deliver to:

RETURN SERVICE REQUESTED

Snowjourner
Springfield Ski & Travel Club
P.O. Box 1146
Springfield, IL 62705



Presort Standard
U.S. Postage Paid
Springfield IL 62705
PERMIT #500

August 2020

The Dining Out Group always meets the 1st Thurs of each month Janice Grosse 217-725-6776
janice_abundant_faith@yahoo.com Don Broughton 217-971-8900 Springfield Ski and Travel Club Board
meets every 2nd Thursday of the month. The SSC Happy Hour is ALWAYS the 3rd Thurs of the month

Sunday	Monday	Tuesday	Wednesday	Thursday	Friday	Saturday
26	27	28	29	30	31	1
2	3	4	5	6 DINE OUT CANCELLED	7	8
9	10	11	12	13 BOARD MEETING	14	15
16	17	18	19	20 HAPPY HOUR Prop Club	21	22
23 30	24 31		26	27	29	30

2020/2021 Springfield Ski and Travel Club Board

President

Richard Bergt
president@springfieldskiclub.org
Cell: 217-341-8225

Executive Vice-President

Terri Marbold
vicepresident@springfieldskiclub.org
Cell: 217-741-7734

Treasurer

Chris Schofield
treasurer@springfieldskiclub.org
Cell: 217-415-6736

Finance Chair

Deon Bishop
finance@springfieldskiclub.org
Cell: 217-891-9669

Secretary

Joyce Metz
secretary@springfieldskiclub.org
Cell: 217-816-4123

VP for Membership

Pennie Stevens
membership@springfieldskiclub.org
Cell: 217-416-5143

VP for Tour Trips

Patty Staab
vptourtrips@springfieldskiclub.org
Cell: 217-836-4406

VP for Day Trips

Wendy Schluter
vpdaytrips@springfieldskiclub.org
Cell: 217-415-4764

VP for Winter Trips

Gary Kindred
vpwintertrips@springfieldskiclub.org
Cell: 217-341-9231

VP for Activities

Sandy Schinneer
activities@springfieldskiclub.org
Cell: 217-622-1996

Publicity Chair

Linda Hammer
PublicityDirector@springfieldskiclub.org
Cell: 217-494-4023

Happy Hours Chair

Karen Kuhar
karenkuhar115@gmail.com
Cell: 217-971-8900

Dine Out Chairs

Janice Grosse 217-725-6776
janice_abundant_faith@yahoo.com
Don Broughton 217-971-8900

Snowjourner Editor

Caroline Porter
snowjourner@springfieldskiclub.org
Cell: 309-221-2330

Skier Development - SKI Representative

Gary Kindred
skierdevelopment@springfieldskiclub.org
Cell: 217-341-9231

Community Service Chair

Betsy Miller
communityservice@springfieldskiclub.org

Sports Chair

Jan Joyce
sportschair@springfieldskiclub.org
Cell: 217-741-1147

MESSAGE FROM THE PRESIDENT

August is a wonderful month for many outdoor activities. You can go biking, golf, play tennis, pickle ball, swim, ski (water), hike, walk, picnic. The list goes on and on. The important thing is to do activities within the Covid-19 guidelines. Illinois is now in phase four. Thirty-seven states are now having high rates of infection. We need to keep Illinois safe and continue to social-distance, wear masks, and wash hands frequently. Your SSTC board also feels strongly about this. SSTC is having a Happy Hour at the Prop Club on Thursday, August 20, where SSTC will require you to wear a mask to protect others and yourself from possible infection. We must also social-distance. For safety purposes, food will not be provided and you should NOT bring your own food. These are minor inconveniences that everyone must follow until the pandemic ends. Weather permitting, information about the upcoming trips will be available outside at the event. Jennifer Shrake will be our guide for a Winter trip to San Diego on February 2-7. A visit to Slovenia-Croatia next spring is another trip tailored for our club. The leader is Patty Staab. For more

information on both trips read the rest of this month's Snowjourner.

On September 26, Wendy Schluter has planned a fun, full day of activities for a day trip to Hannibal, MO. See her article for more information. Safety precautions will be taken. Your temperature will be taken before entering the bus, masks will



be worn on the bus, and social distancing will be practiced. The sign-up event for these trips will be held at the Aqua Club on Saturday, September 12. The sign-up will be different this year. We are not

considering it a party with food, music, and social activities. Precautions will be taken. As much as possible will be done ahead of time by mail in order to limit the number of people to less than 50. Be sure to read the article on Sign-up Procedures by Terri Marbold, VP and sergeant of arms for the event. She has done an excellent job of trying to keep us safe, now do your part and follow instructions. Unfortunately some activities are cancelled for this year. There will be no pool league. The risk factor of trying to social distance would be very difficult in a close quartered environment and equipment would need to be sanitized after every game. Lynn Burger says we will try again next year. There will be no bowling this winter because there is no one to lead the activity this year. I hope you are ready to go on one of our SSTC trips. As you can see, my friend Stax loves to travel and is ready to go for a ride. Stax says, "Just like when I get into a car, I am safe and wear a seat belt, now I must be safe and wear a mask when I am around other people."

Rich Bergt
President

August Birthdays

John Goleman.....	1	Jon Roth	12	Frances King	22
Ron Ingram.....	2	Doug Field	15	John Simpson.....	22
Sascha Millard	3	Andy Grapes	15	Lynn Burger.....	23
Doreen Books	3	Rich Jachino.....	16	Wayne Rovey.....	23
Lew Bird.....	4	Susan Long.....	17	Ruth Kopec	24
Judith Telford	4	Jim Stahl	17	Marilyn Thomas	24
Dan Petrone.....	8	Marilyn Parnell.....	17	Bryan Johnsrud	25
Carol Weller.....	9	Louie Midiri.....	18	Don Schaefer	27
Drinda O'Connor	9	Sharon Weiser.....	18	Marilyn S Budd.....	28
Margaret Schwarz.....	10	David L. Elder.....	19	Kathy Cutler	29
Paul Clouser	11	Diane Long	19	Kathy Summer.....	29
Earl H. Woodrum.....	12	Rich Hunter	19	Charlotte Montgomery	30
Shanna Frank	12	Nancy A Vonnahmen	19	Randy Bower	30
Thomas Bolinger	12	Ken Foard	21	Michael Brownlow.....	31
		Kay Ryan	21		

Pool League Update

Due to the unpredictable COVID-19, the Pool League has been suspended for the upcoming fall session. We believe it is better to err on the side of caution when it comes to the health and safety of our members. Hopefully, we will be able to resume league play in 2021.

Jan Joyce
Sports Chair



Save
the
Date!



September 12

Sign-up opportunity, details attached

September 26

Day trip to Hannibal, MO. Including the riverboat, cave, Mark Twain. Cost \$100, masks and social distancing required, maximum of 30 members.

November 1-13th

Adventures in Portugal, see flyer

January 30- Feb. 6

Ski Trip to Zermatt, Utah. Park City/Canyons, Deer Valley and Sundance Ski Resorts. Trip about \$1800, breakfast included every morning. Travel details to follow.

February 2-7

San Diego, California, see attached flyer

May 19-31

Croatia and Slovenia, see attached flyer

NEW: Trip Activity Levels

Please read through the trip descriptions before signing up for a trip.

SAN DIEGO, CA Feb 2-7, 2021

Tour Activity level: EASY

The San Diego trip will be at whatever pace you want to follow. You will be choosing the activities & sights you'll be visiting.

CROATIA & SLOVENIA, May 19-31, 2021

Tour activity level: MODERATE

Patty Staab, VP Tour Trips

FALL SIGN-UP EVENT

Saturday, September 12 – 4:30 to 6:30

AQUA SPORTS CLUB - 1 Club Area, Springfield, IL

Presented by Terri Marbold, Executive VP and Sergeant of Arms

As you are well aware, these are difficult and unique times we are facing, and the Springfield Ski and Travel Club Board has worked very hard to continue to provide our membership with alternative solutions while adhering to the guidelines of the CDC and the Governor with regard to the COVID-19 pandemic. We feel as a Board we have an obligation to our membership to keep our functions and travels safe for all.

So in keeping with these obligations, we will be making changes to how our membership can sign up for upcoming trips. Instead of a fall Sign Up Party, we will be having a fall Sign Up Event. This means there will not be a party with food and music, but an event that will allow the general membership to sign up for the trips. We ask for your patience and understanding while we navigate these uncharted waters. Our volunteers have done, and continue to do, the very best they can to provide these trips for you, and your patience with the new sign up procedures will be greatly appreciated. These new procedures **ARE SUBJECT TO CHANGE** over the next few months, especially if the guidelines of the CDC and the Governor change and we migrate out of Phase 4.

The members listed below have early sign up privileges before the general membership, so we believe having them sign up by mail or in person to the trip leaders IN ADVANCE of the sign up event, will minimize the number of people at the actual event. We would then ask these members not to attend the event unless they are volunteering to work. Trip leaders will begin accepting applications on **Monday, August 17, 2020**.

- **Board members** who wish to sign up for any trip or activity must submit a completed trip application form and payment to the trip leader BY MAIL or IN PERSON no later than September 1, 2020. If signing up by mail, the envelope must be POSTMARKED by September 1, 2020. Please write “**BOARD MEMBER**” on the outside of your envelope.
- **Trip Leaders** who wish to sign up for any trip or activity must submit a completed trip application form and payment to the trip leader BY MAIL or IN PERSON no later than September 3, 2020. If signing up by mail, the envelope must be POSTMARKED by September 3, 2020. Please write “**TRIP LEADER**” on the outside of your envelope.
- **Early Certificate holders** who wish to sign up for any trip or activity must submit a completed trip application form and payment to the trip leader BY MAIL or IN PERSON no later than September 8, 2020. If signing up by mail, the envelope must be POSTMARKED by September 8, 2020. Please write “**CERT HOLDER**” on the outside of your envelope.

NOTE: If you choose to send your application via the mail, it will be your responsibility to contact the trip leader and let them know you mailed it and to confirm its arrival. The trip leaders **WILL NOT BE RESPONSIBLE IF YOUR APPLICATION GETS LOST IN THE MAIL** and is not received in time. If your application does not make it by the deadline, you will have to come to the sign-up event and wait in line with the general membership.

If a member is entitled to early sign up (Officer, Trip Leader, or member with 10 Hour Certificates), he/she can only sign up themselves. These people cannot sign up two people unless they come to the Sign-Up Event and wait in line with the general membership. You cannot sign up your spouse, significant other, etc., even if you are an Officer, Trip Leader, or a member with a 10 Hour Certificate.

FALL SIGN-UP EVENT

Saturday, September 12 – 4:30 to 6:30

AQUA SPORTS CLUB 1 Club Area, Springfield, IL

Presented by Terri Marbold, Executive VP and Sergeant of Arms

SIGN-UP PROCEDURES ON THE DAY OF THE EVENT:

While specific details of the sign-up procedures are still in the workings due to the current situation with COVID-19, we can share some information we do know:

Those who are in attendance will be asked to wait outside the Aqua Sports Club until they are permitted in the building to sign up for a trip. The bar inside will be open, so you will be allowed inside long enough to get drinks at the bar or use the restrooms, but we ask that you go back outside until your name is called for signing up (specific procedures for lining up will be detailed in the September Snowjourner). This allows us to keep the number of people in the building under the required 50 person limit set by the Governor. **YOU WILL BE REQUIRED TO WEAR A MASK WHILE IN THE BUILDING.** This is for your safety, as well as the safety of our volunteers and the staff of the Aqua Club. You may be refused entry to the building if you are not willing to comply with this requirement. Again, your patience and understanding with this is greatly appreciated!

MEMBERSHIP REQUIREMENTS:

Your membership must be current and in good standing to allow you to sign up for any trip or activity. The Membership Table will be available starting at 4:30 pm. The Membership VP will be available to sign up new members, process member renewals, update directory information, and assist with other membership issues.

THINGS TO REMEMBER:

- Everyone must complete a trip application form and have payment available (and a copy of first page of passport if traveling abroad) for any trip for each person you will be signing up, including yourself. A copy of the Trip Application Form is included in the newsletter and can also be printed from the Springfield Ski and Travel Club website. **PLEASE COMPLETELY FILL OUT EACH APPLICATION AHEAD OF TIME, INCLUDING MEMBERSHIP NUMBERS AND PASSPORT NUMBERS IF REQUIRED.**
- Payment Rules: A separate check is required for each trip or activity. If you are signing up more than one person for a particular trip, one check can be used. Checks should be made out to the Springfield Ski and Travel Club.

It is important to point out, these procedures will only be in place as long as we are still in Phase 4 and are allowed to have the event at the club. Should things change between now and then and we are sent back into Phase 3, ALL SIGN UPS WILL BE DONE BY MAIL OR IN PERSON. If this happens, you will be updated on the new procedures by an email blast to the membership and it will be posted on our Facebook page and website.

Roger's 2020 Oktoberfest Is Cancelled



Beer lovers may have noticed this news article:

Munich (Germany) (AFP) - Bavaria cancelled the iconic Oktoberfest.

The event was expected to draw six million visitors, but it would be too dangerous "as long as there is no vaccine", Bavaria state premier Markus Soeder said. Even with masks and social distancing, the threat of contagion was too high. "Living with the coronavirus means living carefully," he said. This year marks the first time that Germany will have to do without the festival since the last world war.

If you were not already convinced of the seriousness of the pandemic, surely this news from a country with a strong trustworthy leader will do it. I am taking heed. Though months away, without some sort of miracle, my 42nd Annual Oktoberfest is put on hold.



My heart is gladdened by the wonderful turnout for last year's Fest. Should the 41st Annual be my swansong, I know we went out in style.

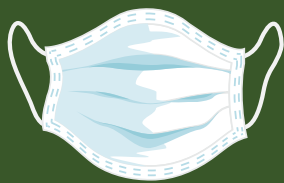
You are all invited to visit, albeit in very small groups, masked and practicing safe social distancing. The beer still flows and a bonfire can be arranged at a moment's notice. The bands, though, will have to wait until we can safely gather in large numbers again.

Last year's Lost and Found: a black party-pak the size of a small back pack, loaded with wine coolers, wine opener and several assorted koozies. Also a non-automotive key on a Toyota Camry ring.

My garlic plants are looking great. I should have plenty of fresh garlic to give away this fall.

Thank you all for your wonderful additions to the previous parties. I miss you all. Roger

Stop the Spread!



Wear a mask so that we may travel again!

ADVENTURES IN PORTUGAL

NOVEMBER 1-13TH

TRIP LEADER: Mike Bloechle – 217/787-1010 or m.bloechle@comcast.net

PRICE: \$3,060.00 (land and air) – based on a minimum of 30 and maximum of 45 travelers

Single Supplement - \$699 added to the price of the trip – limit of 5

Land only – Price will be adjusted on the 3rd and 4th payments.

TRIP INCLUDES:

- Bus transportation to and from O'Hare Airport
- Air transportation to Porto and from Lisbon
- Airfare taxes, fees and fuel surcharges (subject to change)
- Airport transfers, government taxes, fees, airline fuel surcharges included but subject to change
- Motor coach transportation throughout the trip
- English speaking guide throughout the trip
- Three nights in Porto, two nights in Coimbra, two nights in Evora and four nights in Lisbon
- Four full-day and four partial-day tours
- Breakfast daily, one lunch and two dinners – welcome
- Welcome dinner in Porto and farewell dinner with Fado show in Lisbon
- Gratuities for guide in Portugal, bus drivers (Chicago and Portugal), hotel porters (one piece of luggage per person), and serving staff at included meals

PAYMENTS:

- Deposit at sign-up: Land & Air = \$765; Single Supplement = \$940
- 2nd Payment due 10/4/2019: \$765; single supplement = \$940
- 3rd Payment due 11/4/2019: \$765; single supplement = \$940
- 4th Payment due 12/4/2019: \$765; single supplement = \$939

The final payment (including land only and single supplement fees) may be adjusted up or down depending on other fees or costs that may apply including those from the tour operator or from the Springfield Ski and Travel Club. Refunds or additional payment may be required if payment in full is received prior to the adjustment.

PASSPORTS:

AT SIGN-UP, SUBMIT YOUR TRIP APPLICATION AND A COPY OF THE FIRST PAGE OF YOUR PASSPORT WHICH SHOWS YOUR PICTURE, PASSPORT NUMBER, DATE OF BIRTH, ETC. YOUR TRIP APPLICATION MUST BE COMPLETED TO EXACTLY MATCH YOUR PASSPORT INFORMATION.

Passports must be valid for 6 months after the trip return date for international travel.

INCLUDED ACTIVITIES: (entry fees included for these activities):

- Applicable entry fees are included for these activities.
- Walking tour of Porto
- Visits to Aveiro, Guarda, Tomar, Fatima, Obidos, Marvão
- Full-day excursion to Lamengo and the Quinta da Pacheca Winery (wine tasting and three-course lunch)
- University of Coimbra and Royal Palace (Coimbra)
- Marvão Medieval Village
- Cathedral and Cloisters of Évora
- Wine and olive tasting in Évora
- Capela dos Ossos (Chapel of Bones)/Royal Church of St. Francis (Évora)
- Belém Riverside District (Lisbon), 16th century Monastery of Jeronimos and Belem Tower
- Obidos Medieval Fortress
- Fado show with dinner
- Free time for shopping in Lisbon, Coimbra, Evora and Porto
- Visit to 12th century settlement built by the Knights Templar in Tomar

HOTELS (subject to change based on availability):

- Three nights in Porto at Carris Porto Ribiera – Class 4*
- Two nights in Coimbra at Tivoli Coimbra Hotel - Class 4*
- Two nights in Évora at Vila Galé Évora - Class 4*
- Four nights in Lisbon at Mundial or Tivoli Oriente - Class 4*

OPTIONAL TOURS

(Prices are in Euros and are approximations):

- Half-day excursion to Guimaraes (35€ per person)
- Douro River Cruise with wine/cheese tasting (40€ per person)
- Half-day excursion to the Conimbriga Ruins (18€ per person)
- Half-day Baixa District tour in Lisbon (26€ per person)
- Sintra excursion (60€ per person)



Cancellation Dates/Fees:

- Cutoff date – **September 13, 2019**, there is a \$25 SSTC processing fee.
- Between **September 14, 2019 and November 3, 2019** - \$300 per person.
- November 4, 2019 or after, YOUR OBLIGATION IS THE FULL PRICE OF THE TRIP.
- If a replacement is found by November 4, an adjustment may be possible.
- No refunds will be given for unused portions of the package and all cancellations must be requested in writing. Contact the trip leader regarding any cancellation.
- **ALL CANCELLATIONS ARE SUBJECT TO \$25 SSTC PROCESSING FEE.**

Trip Insurance: The Springfield Ski and Travel Club strongly recommends the purchase of trip insurance covering accident, sickness or death of a participant or covered family member that would result in cancellation either prior to or during the trip. Trip insurance is available from SmarTours for \$179 (<http://www.tripmate.com/wpf394H>), but you can use other insurers as well. Trip insurance should be purchased as soon as possible to ensure complete coverage.

SPRINGFIELD SKI & TRAVEL CLUB

Springhill Suites Bayfront

San Diego, California

WHEN: February 2-7, 2021

TRIP LEADERS: Jennifer & Tim Shrake
217-698-5480

PRICE: \$1,200 per person (double occupancy)
Maximum number of participants is 20.
A few Single Supplements are available
at an additional \$613.00 each.



TRIP INCLUDES: Springhill Suites Bayfront

Round trip air transportation between Springfield and San Diego.

Airport transfers, government taxes, fees, airline fuel surcharges included but
subject to change

Ground transportation to and from the hotel

Five nights at the Springhill Suites Bayfront. Free breakfast, M-Th Happy Hour
and Trolley pass

PAYMENTS:

Deposit at sign-up: \$400.00. Add \$206 for single supplement

2nd Payment due 10/8/2020 — \$400 Add \$206 for single supplement

3rd Payment due 11/7/2020 — \$400. Add \$201 for single supplement

The final payment may be adjusted up or down depending on other fees or costs that may apply including those from the tour operator or from the Springfield Ski & Travel Club. Refunds or additional payment may be required if payment in full is received prior to the adjustment.



Some of the things you can do in San Diego: San Diego Zoo, Pacific Beach, La Jolla Beach, Coronado Beach, Gaslamp District, SeaWorld, Old Town, Whale Watching, Maritime Museum, Balboa Park, Point Loma, the USS Midway Museum and Cruises

A note from SpringHill Suites San Diego Downtown/Bayfront

What you can expect during your stay

Hand sanitizer available to guests & staff

Regularly sanitized high-traffic areas

We are committed to offering an environment that aligns with expert protocols for working to defeat COVID-19. Consisting of in-house and outside experts in food and water safety, hygiene and infection prevention, and hotel operations, our Marriott Cleanliness Council is redefining our cleaning and safety standards. Starting with our public spaces and high-traffic areas, Marriott is going above and beyond our normal protocols. We are cleaning surfaces with increased frequency, dedicated staff, and recommended cleaning agents. Marriott has elevated our rigorous protocols to thoroughly clean all surfaces with hospital-grade disinfectants. We will be placing disinfectant wipes in rooms. Hand sanitizing stations are being installed at hotel entrances, at our front desks, our elevator banks, and meeting spaces. Signage in public spaces will remind Marriott guests to maintain social distancing. Read more about Marriott's Commitment to Clean by visiting <https://clean.marriott.com/>.

CROATIA AND SLOVENIA TOUR WITH AN ADRIATIC CRUISE

WHEN: May 19-31, 2021

TRIP LEADER: Patty Staab – patstaab@comcast.net or 217.836.4406

PRICE:

Air & Land: \$3,950/person (double occupancy)

Land Only: Price adjusted on the 4th payment

Maximum number of participants is 40.

TRIP INCLUDES:

- Bus transportation to and from O'Hare Airport
- Round trip air transportation between Chicago and Slovenia/Croatia (fare is estimated and subject to change)
- Airport transfers, government taxes, fees, airline fuel surcharges included but subject to change
- Port fees and tourist taxes
- Motor coach transportation throughout the trip
- English speaking tour leader/cruise manager
- Six days on our own private yacht cruising the Croatian Islands in the Adriatic Sea with stops on the islands of Brac, Hvar, Vis, Korcula and Mljet (MS President or MS Karizma)
- Additional time in Ljubljana (capital of Slovenia), Bled (Lake Bled), Zagreb (capital of Croatia), National Park Plitvice Lakes, Split and Dubrovnik
- Daily tours (no add-on costs for tours) with free time for exploring, shopping or simply relaxing
- Guided walking tours of Ljubljana, Zagreb, Plitvice Lakes National Park, Split, Hvar Town, Korcula and Dubrovnik
- Breakfast daily, seven lunches and six dinners (including dinner at Fodor's recommended Roki's on the Island of Vis)
- Welcome dinner in Ljubljana and Farewell dinner in Dubrovnik
- Olive oil and wine tastings
- Gratuities for bus drivers (Chicago and Croatia), tour director and yacht crew



Ljubljana, Slovenia



PAYMENTS:

Deposit at sign-up: \$1,000.00

- **2nd Payment due 10/2/2020 – \$1,000.00**
- **3rd Payment due 11/2/2020 – \$1,000.00**
- **4th Payment due 12/2/2020 - \$950.00**
- Land-only payments will be adjusted on the 4th payment

The final payment (including land only fees) may be adjusted up or down depending on other fees or costs that may apply including those from the tour operator or from the Springfield Ski and Travel Club. Refunds or additional payment may be required if payment in full is received prior to the adjustment.

PASSPORTS:

AT SIGN-UP, SUBMIT A COPY OF THE FIRST PAGE OF YOUR PASSPORT WHICH SHOWS YOUR PICTURE, PASSPORT NUMBER, DATE OF BIRTH, ETC. WITH YOUR TRIP APPLICATION. Passports must be valid for 6 months after the trip return date for international travel.

- **Cancellation Dates/Fees (Land Portion Only)**

Cutoff Date – Cancel by September 18, 2020 and pay only the \$25 SSTC processing fee.

Cancel between September 18 and October 1, 2020, \$500 is non-refundable plus \$25 SSTC processing fee

Cancel between October 2, 2020, and March 8, 2021, \$1,000 is non-refundable plus the \$25 SSTC processing fee.

Cancel after March 8, 2021, your obligation is the full price of the trip plus \$25 SSTC processing fee.

No refunds will be given for unused portions of the package.

All cancellations must be requested in writing. Contract the trip leader regarding any cancellation.

- **Airfare Cancellation** - Dates and amounts of refunds will be based on the airline policy.
- **ALL CANCELLATIONS SUBJECT TO \$25 SSTC PROCESSING FEE.**

INCLUDED ACTIVITIES:

- Entrance fees included for the Olive Oil Museum on Brac, Plitvice Lakes National Park and Mljet National Park
- Wine tastings
- Olive oil tastings
- Boat ride on Lake Bled
- Hike Vidova Gora while in Brac
- Boat ride to St. Mary Isle to visit an ancient Benedictine monastery, an old abbey and a church dating back to the 12th century
- Visit salt lakes in the Mljet National Park
- Visit Skrip, Brac Island, which is the oldest settlement on the islands, and its Museum of Olive Oil
- Explore Hvar Island which is known for lush lavender fields, breathtaking beauty and the oldest community theatre in Europe – founded in 1612
- Rent kayaks, bikes, scooters or convertible cars on your own to roam around Mljet Island
- Visit Korcula Island (birthplace of Marco Polo) and participate in a tasting of local red and white wines
- Tour Old Town Dubrovnik, it's famous main street of Stradun, the Rector's Palace and City Walls which are a UNESCO World Heritage Site
- And much, much more!



Plitvice Lakes National Park

HOTELS (subject to change based on availability):

- Ljubljana – Grand Hotel Union – 1 night – Class 4*
- Zagreb – Hotel Amadria Park Capital – 1 night – Class 4*
- MS President or MS Karizma – 6 nights – 4.5* on Trip Advisor
- Dubrovnik – Hotel Neptun – 2 nights – Class 4*
- Vienna, Austria – NH Vienna Airport Hotel – 1 night – Class 4*

Trip Insurance: The Springfield Ski and Travel Club strongly recommends at a minimum the purchase of trip insurance covering accident, sickness or death of a participant or covered family member that would result in cancellation either prior to or during the trip. Travelers are encouraged to purchase “Cancel for Any Reason” insurance if possible (be sure to compare coverage as some packages do not cover the full price of a trip). Your trip insurance should be purchased as soon as possible to ensure complete coverage.

SPRINGFIELD SKI and TRAVEL CLUB

Application Form for Trips/Sporting Events

☐ Ski Trip ☐ Tour Trip ☐ Day Trip ☐ Sporting Event
 (golf, bowling, tennis, billiards, etc.)

Trip/Sporting Event: _____ Date of Application: _____

Name*: _____ Member Number: _____

Address: _____ E-mail Address: _____

City: _____ State: _____ Zip: _____

Home #: _____ Cell #: _____ Work#: _____

Emergency Contact: _____ Phone #: _____

Do you have any significant medical problems or do you require any special medications which your trip leader should be aware of? If yes, describe:

Complete this section for Ski or Tour trips only:

Male: ___ Female: ___ DOB: _____ DL #: _____ DL State: _____

Passport # (if international trip): _____ Passport Exp Date: _____

Roommate Preference: _____ Other Request: _____

Are you interested in: NASTAR racing? ___ Lessons? ___ Are you a skier? Yes ___ No ___

The Springfield Ski Club in good faith makes every effort to complete a scheduled activity or trip as advertised, and to accommodate the requests of its members. However, the Club will not be held responsible if arrangements are changed beyond our control or if specific requests cannot be honored. This includes, but is not limited to, changes in our itineraries, airline arrangements or schedules, hotel or condo reservations, destinations, and emergencies requiring a modification of any scheduled activity or trip. Your signature below warrants you have read and understand this statement.

I agree to make the appropriate published trip payments on the scheduled due dates.

I have also read and understand the trip policy statements on page two of this form and agree to abide by them.

As a participant of the trip described above: I voluntarily agree not to hold the Springfield Ski Club, its agents, officers, Board of Directors, or members liable for any accident or injury to myself, or for any loss of or damage or destruction to my property, which may result from or on account of my participation in a Club activity.

Signed: _____ Date: _____

* For trips involving airline travel or overseas travel, your name must be written exactly as it appears on your passport or drivers license. Do NOT use nick-names.

For trip leader use only

App. No. _____ Wait List: _____

Full Trip Price: \$ _____ Partial Trip Price: \$ _____ Notes: _____

1st Deposit: \$ _____ Due: ____/____/____ Paid: ____/____/____

2nd Deposit: \$ _____ Due: ____/____/____ Paid: ____/____/____

Final Payment: \$ _____ Due: ____/____/____ Paid: ____/____/____

Approved Refund: \$ _____ Total Paid: \$ _____

STANDING RULE #2

CANCELLATION & REFUND POLICY (11/14/96), (Amended 5/13/99, 4/9/05 and 1/8/15)

“Cutoff” dates and non-refundable deposits for trips and activities may vary according to transportation, lodging or other associated deposits. Cutoff dates for trips and activities will be established for each trip or activity by the Executive Board and published in the monthly newsletter. All cancellations must be made to the Trip Leader in writing or via e-mail. Refunds will be made as follows:

1. For cancellations before the published cutoff date, a full refund of all monies paid will be issued in a timely manner, less any Executive Board-approved cancellation processing fee established and published in conjunction with the trip or activity advertisement in the monthly newsletter.
2. For cancellations after the cutoff date, refunds will be as follows:
 - a. For any trip or activity where the allotted number of spaces are completely reserved and a replacement can be found, a cancellation may be made and a full refund issued, less any processing fees, as described in paragraph 1, above, any time prior to the departure of the trip or the start of the activity, provided the replacement person pays the full amount due, in accordance with the payment schedule for the trip or activity.
 - b. If a replacement cannot be found, the member canceling the trip or activity may submit, in person, in writing, or via email, a request for a refund. This request must be sent to either the trip leader, the appropriate VP or directly to the Executive Board. The request must be submitted within 15 days after the scheduled start date of the trip or activity and shall state the reason for the cancellation and the amount of refund requested. Requests will only be considered by the Executive Board, and refunds will only be made, once the trip or activity is completed and the full financial statement has been submitted for review and approval, as described in Standing Rule #13. Any refund approved by the Executive Board will come from recoverable expenditures derived from the specific trip or activity and not from the Club’s general fund.
 - c. Refunds will be distributed no later than 180 days after the first scheduled day of the trip or activity.

STANDING RULE #5

TRIP MANAGEMENT AND CONDUCT (11/14/96), (Amended 4/9/05 and 1/8/15)

1. All Trip Leaders shall be at least 21 years of age.
2. Trips shall be run as advertised, unless ski conditions, safety or wellbeing of trip participants dictate otherwise, in which case, the decision for an alternate plan rests with the Vice President of Ski Trips, Day Trips, or Tour Trips (as appropriate) or the President prior to departure. After departure, this authority rests with the trip leader.
3. Conduct by any individual which is offensive or hazardous to others or that does not project a good image of the Club could result in expulsion from the trip at the nearest place of public lodging or transportation by the authority of the trip leader. The trip leader will provide a review of the circumstances at the next Executive Board meeting with a board decision to maintain or cancel the individual’s Club membership.
4. Individuals will be held responsible for any damage to personal or real property of others.
5. Club arranged accommodations cannot be shared with non-trip participants.

STANDING RULE #7

GROUND TRANSPORTATION SMOKING POLICY (11/14/96)

1. Smoking will only be allowed during scheduled stops approximately every two hours of travel, if requested. NO smoking inside the travel vehicle is allowed.
2. Trips under two hours in duration will be classified as “non-smoking trips.”

STANDING RULE #8

PARTIAL SKI TRIP PACKAGES (11/14/96) (amended 4/9/05)

1. For trips involving a request to delete air (or other packaged form of transportation) service, only the actual cost of the ticket will be deducted from the trip price. The participant’s portion of the club’s overhead cost, including ground transportation to the airport or rail station used for the trip, will be included in the partial trip price.
2. All requests for partial trip packages will only be honored to the point where the Club may drop reserved seats without penalty from the tour operator and/or the carrier.
3. If a request for a partial trip participation is made and honored, the participant must make payment in the full amount within 5 days of the approval notification. A “partial” trip payment is not refundable unless the trip is canceled. CANCELLATION CUT-OFF DATES DO NOT APPLY. The club will not refund or attempt to “resell” partial trip packages should the participant drop from the trip any time after payment is made.
4. Requests to exclude lift tickets from a trip package must be made at the time of sign up. Requests for partial trip packages, including lift tickets, will only be honored to the point where the Club may drop such tickets, or other items, without penalty or loss of income (including any comp). Unless otherwise approved by the Vice President of Ski Trips, the member requesting “no lifts” will pay the full trip price. After the trip is completed, the unused lift ticket will be returned by the Club to the tour operator or the ski area for possible refund. Any refund will then be made to the member by Club check. Refunds may not be possible if purchase and use of a lift ticket by all trip participants is required for the Club to receive a discounted “group rate.”

SPRINGFIELD SKI CLUB

Membership Application May 1, 2020 through April 30, 2021

Amount \$ _____

Date _____

ID # _____

(Club Use Only)

(Mail the completed form along with your check to Springfield Ski Club, P.O. Box 1146, Springfield, IL 62705)

Membership and Directory Information:

Full Name: _____ Category: ☐ Individual ☐ Family ☐ S.K.I.

Address: _____

City: _____ State: _____ Zip: _____ - _____

Home Phone: (_____) _____ - _____ Cell Phone: (_____) _____ - _____

E-mail Address: _____

Type: ☐ New ☐ Renewal

Check for listing in Club Directory: ☐ Home Address ☐ E-Mail Address ☐ Home Phone ☐ Cell Phone

All members will receive two printed full Snowjourners each year and 10 electronically. If you want to continue to receive monthly, mark Yes ____ or No _____. There will be a \$20 fee for monthly mailing. It is also available online at springfieldskiclub.org

Primary Membership Information:

First Name: _____ MI _____ Last Name: _____

Membership and Dues -- Non-Refundable:

- ☐ \$20 Monthly newsletter
☐ \$40 Individual (over age 21)
☐ \$50 Family (spouses and children under age 21)
☐ \$10 Reciprocal Membership (must be a member of one of the following clubs (indicate with a ✓):
☐ Bloomington ☐ Peoria ☐ Champaign
☐ Lifetime Member (must be member for 25 consecutive years)

Club Interests (check all that interest you):

- ☐ Board Member
☐ Activities (Party Chairperson, Volunteer at Parties)
☐ Membership (Volunteer at Sign Up Parties)
☐ Community Service (Volunteer at Charity Events)
☐ Trip Leader for Ski and/or Day Trips
☐ Sports Coordinator (Billiards, Bowling, Golf, Tennis)
☐ Are you a skier?
☐ Other: _____

How did you discover our Club? (i.e., friend, website, radio ad, Club event): _____

Membership and Family Data:

Name of Each Individual (include yourself)	Birth Date MM/DD/YY	Adult/ Child	Sex	Single/ Married

Anyone 21 years of age or older is eligible for membership in the Springfield Ski Club. Family membership is one or two adults in the same household and their children (See Bylaws, Article IV, pages 12 & 13 of 2018-2019 Directory). This membership entitles you to membership in the Ski Kouncil of Illinois (S.K.I.).

In applying for Springfield Ski Club membership, I (we) intend to participate in meetings and activities, uphold the constitution and by-laws, and abide by the decisions of the Executive Board. I (we) voluntarily agree not to hold the Springfield Ski Club, its agents, officers, Executive Board, or members liable for any accident or injury to myself, or for any loss of or damage or destruction to my property, which may result from or on account of my participation in a Club activity.

Signature: _____ Date: _____